

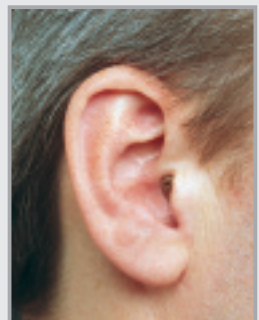
Calibra 1 ITE



Calibra 1
RX-12



Calibra 1
RX-20, RX-34



Calibra 1
RX-35, RX-38

Calibra 1 ITE

Performance Data	Earsimulator IEC 118-0	2 cm ³ Coupler		
		IEC 118-7	ANSI S3.22 - 1996 AGC off	
Saturation Sound Pressure Level				
At Frequency Reference Test	dB SPL	131	120	-
Peak	dB SPL	132	123	123
HFA-SSPL90	dB SPL	-	-	121
DIN 45605 09/65	dB SPL	-	-	-
Full on Gain (Input 50 dB)				
At Frequency Reference Test	dB	63	52	-
Peak	dB	64	55	50
HFA Full-On-Gain	dB	-	-	44
Reference Test Gain	dB	-	46	44
DIN 45605	dB	-	39	-
Frequency Response (DIN 45605)				
Low Frequency Limit	Hz	100	100	100
High Frequency Limit	Hz	4800	4800	4800
Total Harmonic Distortion (RTG)				
500 Hz	%	2	2	2
800 Hz	%	2	2	2
1600 Hz	%	3	3	3
Equivalent Noise Level (RTG)	dB	18	18	20
Induction Coil Sensitivity				
MASL* Input = 1mA/m@FOG, RTF	dB SPL	-	86	-
HFA-SPLITS** (Left/Right)	dB SPL	-	-	105
STS*** (Left/Right)	dB SPL	-	-	2
Battery Current				
Battery (Type 13 zinc-air) life	mA hours	0,8 120	0,8 120	0,8 120
Reference Test Frequency	Hz	2500	2500	-

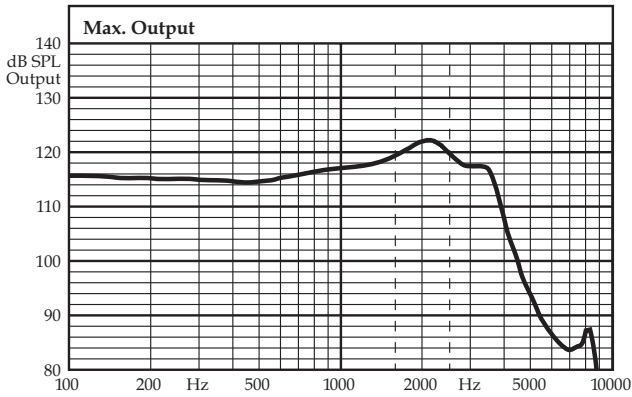
* MASL = **M**agneto **A**coustical **S**ensitivity **L**evel

** SPLITS = Coupler **SPL** for an **I**nductive **T**elephone **S**imulator

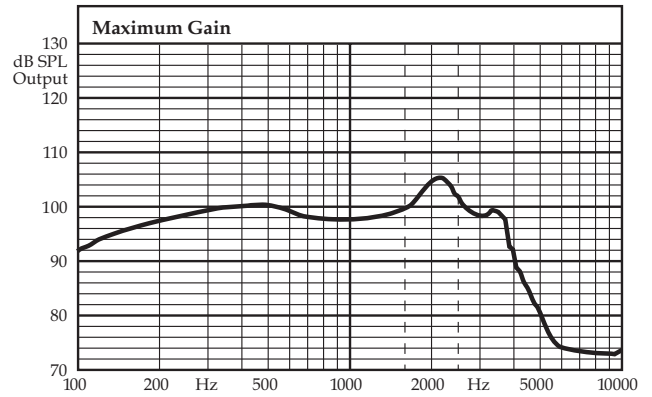
*** STS = **S**imulated **T**elephone **S**ensitivity

Calibra 1 ITE

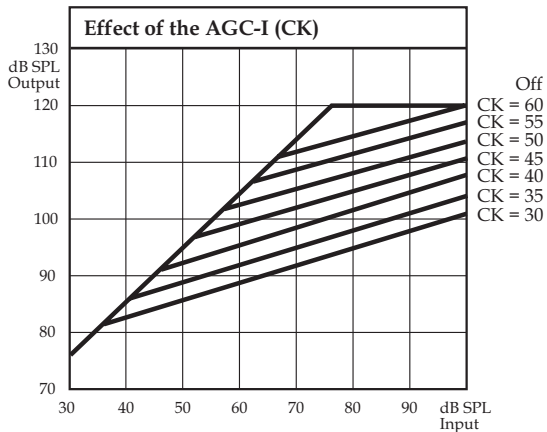
Measurements per IEC 118-7



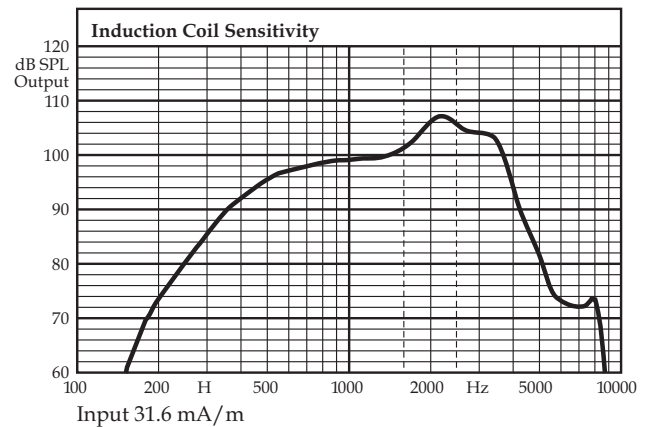
— Maximum Power Output - Input: 90 dB, AGC-O off, FOG



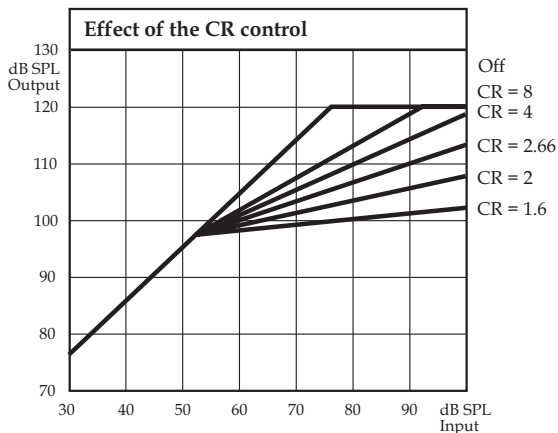
— Input: 50 dB, AGC-O off, FOG



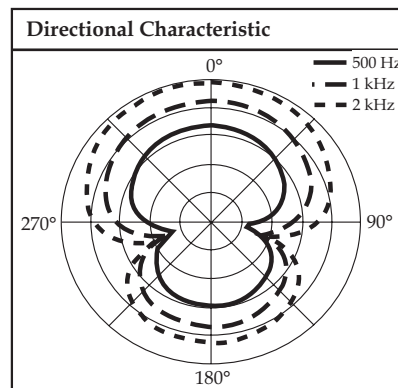
RTG
f = 2.5 kHz CR2 = 3:2

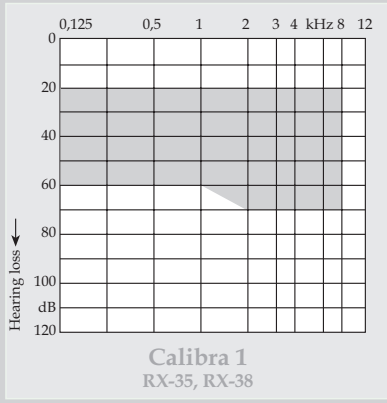
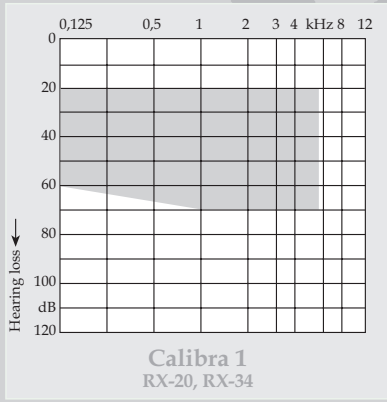
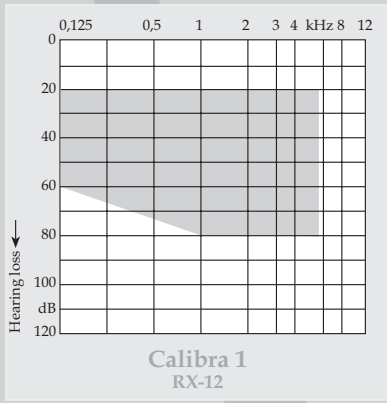


Input 31.6 mA/m



FOG
f = 2.5 kHz CK = 45 dB





Subject to change without prior notice