

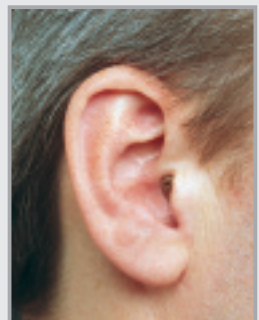
# Calibra 3 ITE



Calibra 3  
RX-12



Calibra 3  
RX-20, RX-34



Calibra 3  
RX-35, RX-38

# Calibra 3 ITE

Performance Data	Earsimulator IEC 118-0	2 cm <sup>3</sup> Coupler		
		IEC 118-7	ANSI S3.22 - 1996 AGC off	
<b>Saturation Sound Pressure Level</b>				
At Frequency Reference Test	dB SPL	126	120	-
Peak	dB SPL	130	123	123
HFA-SSPL90	dB SPL	-	-	119
<b>Full on Gain (Input 50 dB)</b>				
At Frequency Reference Test	dB	56	50	-
Peak	dB	63	55	55
HFA Full-On-Gain	dB	-	-	50
Reference Test Gain	dB	50	43	43
<b>Frequency Response (DIN 45605)</b>				
Low Frequency Limit	Hz	100	100	100
High Frequency Limit	Hz	8000	8000	8000
<b>Total Harmonic Distortion (RTG)</b>				
500 Hz	%	2	2	2
800 Hz	%	2	3	3
1600 Hz	%	2	2	2
<b>Equivalent Noise Level (RTG)</b>	dB	10	10	10
<b>Induction Coil Sensitivity</b>				
MASL* Input = 1mA/m@FOG, RTF	dB SPL	-	82	-
HFA-SPLITS** (Left/Right)	dB SPL	-	-	104
STS*** (Left/Right)	dB SPL	-	-	2
<b>Battery Current</b>				
Battery (Type 13 zinc-air) life	mA hours	0,8 120	0,8 120	0,8 120
<b>Reference Test Frequency</b>	Hz	1600	1600	-

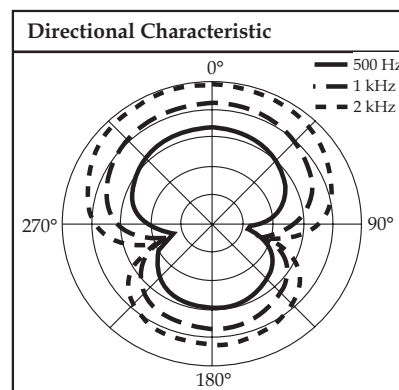
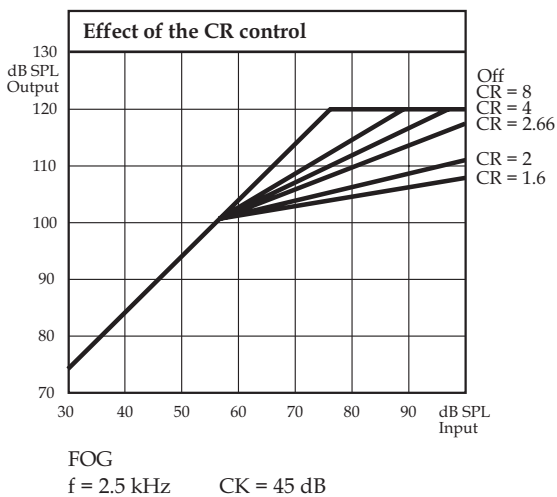
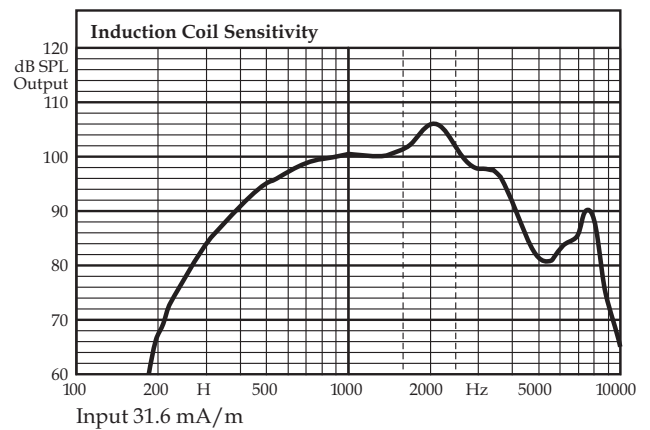
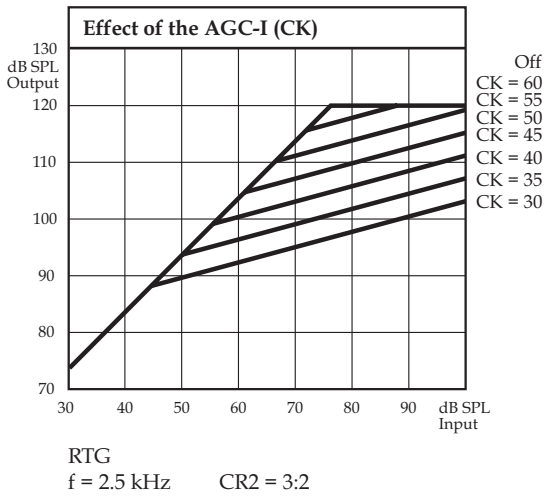
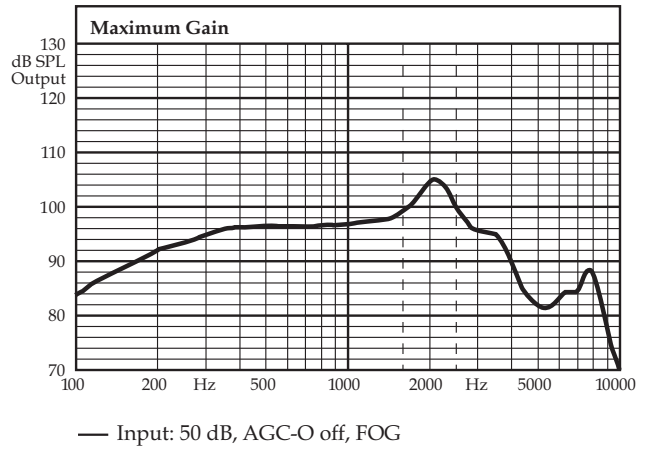
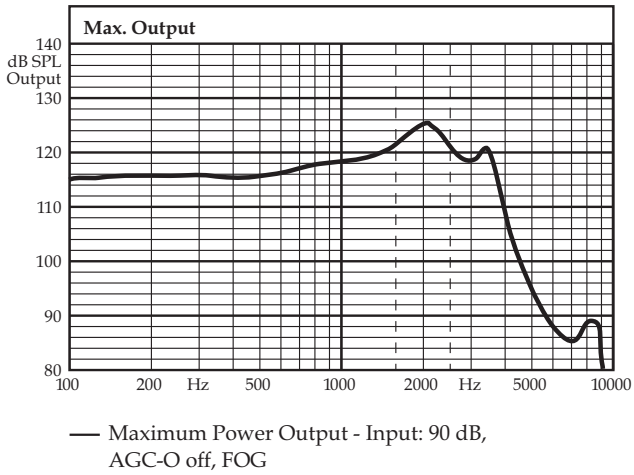
\* MASL = **M**agneto **A**coustical **S**ensitivity **L**evel

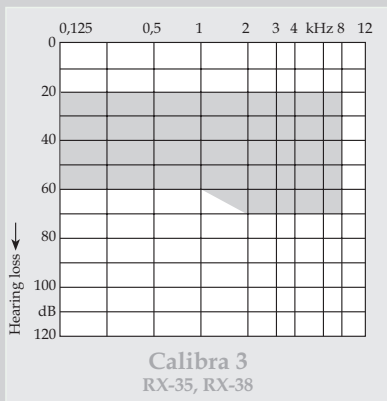
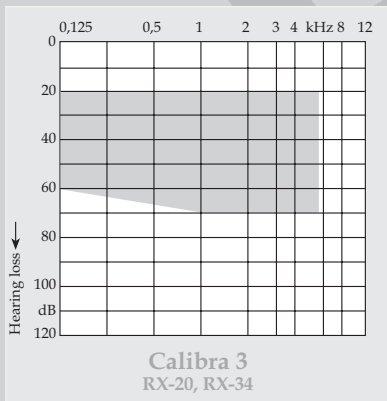
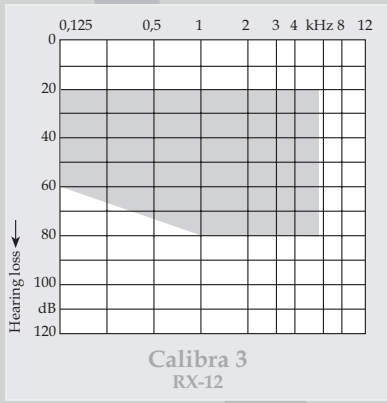
\*\* SPLITS = Coupler **SPL** for an **I**nductive **T**elephone **S**imulator

\*\*\* STS = **S**imulated **T**elephone **S**ensitivity

# Calibra 3 ITE

## Measurements per IEC 118-7





**REXTON**

Subject to change without prior notice

Siemens Audiologische Technik GmbH  
Gebbertstrasse 125, D-91058 Erlangen

REXTON is a brand name of  
Siemens Audiologische Technik GmbH

Order No. A91100-M5100-F376-01-7600  
Printed in Germany / PA 122005 · CG